

ALL LUMBER AND RECYCLED PLASTIC LUMBER  
WILL BE 3" X 4" NOMINAL SIZE

BENCHES COME IN 6 FT. & 8 FT. LENGTHS

FRAMES COME WITH THE OPTION OF GALVANIZED  
COATING OR BLACK POWDER COATING

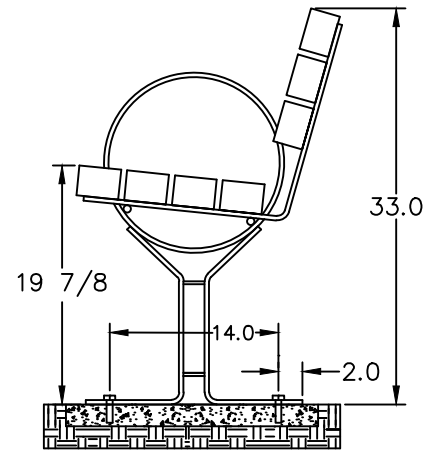
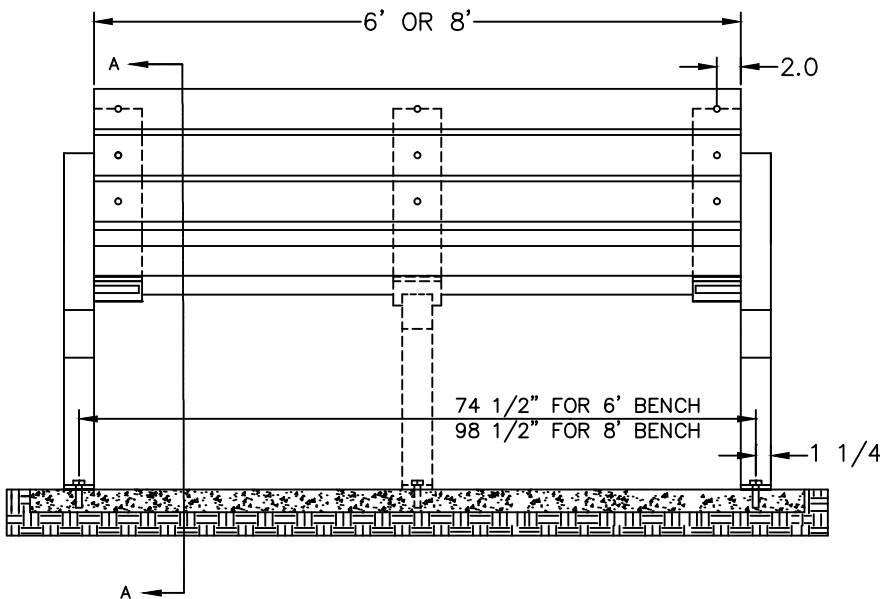
SEE PAGE 2 FOR ORDER SPECIFICATIONS



SEAT BRACKETS ARE  
3/8" X 4" BAR STOCK

LEGS & ARM RESTS ARE  
3/8" X 2 1/2" BAR STOCK

NOTE: CENTER FRAME IS  
REQUIRED WITH RECYCLED  
PLASTIC LUMBER



SECTION "AA" SHOWN FOR CLARITY

FRAMES SHOULD BE ANCHORED TO A  
CONCRETE PAD PROVIDED BY THE CUSTOMER

**WARNING: MUST BE PERMANENTLY MOUNTED**

CUSTOMER APPROVAL :

DATE :

**JAMESTOWN**  
**ADVANCED**  
**PRODUCTS**  
CORPORATION

THIS DRAWING, WHICH CONTAINS PROPRIETARY INFORMATION, IS THE PROPERTY OF JAMESTOWN ADVANCED PRODUCTS CORPORATION. IT SHALL NOT BE REPRODUCED IN ANY MANNER NOR DISCLOSED TO THIRD PARTIES WITHOUT WRITTEN PERMISSION OF JAMESTOWN ADVANCED PRODUCTS CORPORATION.

DATE : 10-19-00

PRODUCT PART NUMBER : I1637

REV. NO. 2 12/9/15

PRODUCT DESCRIPTION :  
HOOP BENCH

2855 GIRTS ROAD  
JAMESTOWN, NY 14701